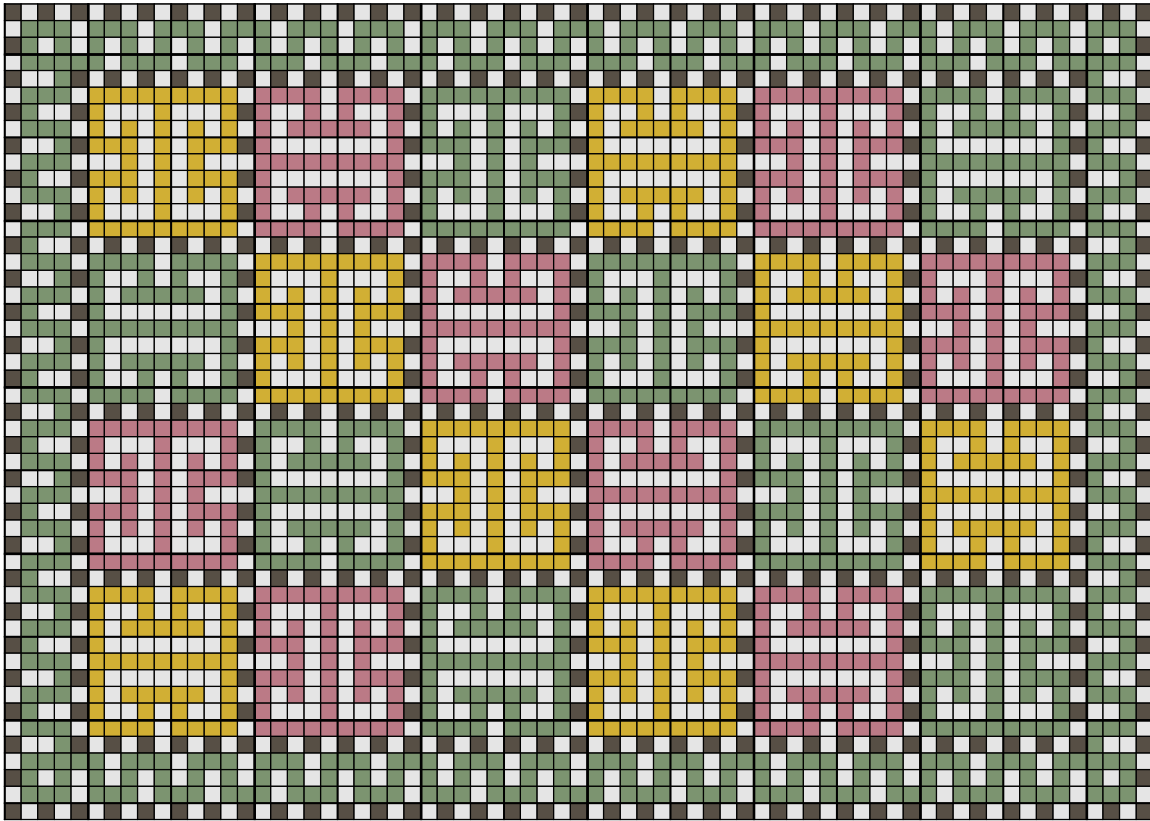







1:48 scale rug: Swedish 1930's design



	Litchee mauve	DMC 3727		Fern green	320
	Maze yellow	3820		Pearl grey	762
	Pepper black	844			

Stitch Count 69 x 49

Design Area 1 3/4 x 1 1/4 inches at 40ct

1 1/2 x 1 inches at 48ct

1 1/4 x 7/8 inches at 54ct

Note: Based on "Ursula", a rug designed 1935 by Märta Måås-Fjetterström, Sweden. The original rug had fringed ends.

Cut silk gauze approximately 1 1/2" to 2" wider and longer than design area.

Glue gauze into an "embroidery frame" cut from sturdy card, with an aperture 1/2" less than the size of the gauze.

After stitching is completed, remove gauze from frame. Pin it to e.g. an ironing board, stretching it so all corners are square. Cover with a damp cloth and let dry overnight.

Cut about 3/16" from stitching. Apply FrayCheck to the very edge, and let dry.

Fold under all except one thread, and overcast all edges with grey (#453) floss. Add an extra strand if the gauze tends to show between the stitches.

Design By: Anna-Carin Betzén

Copyright © By: Anna-Carin Betzén