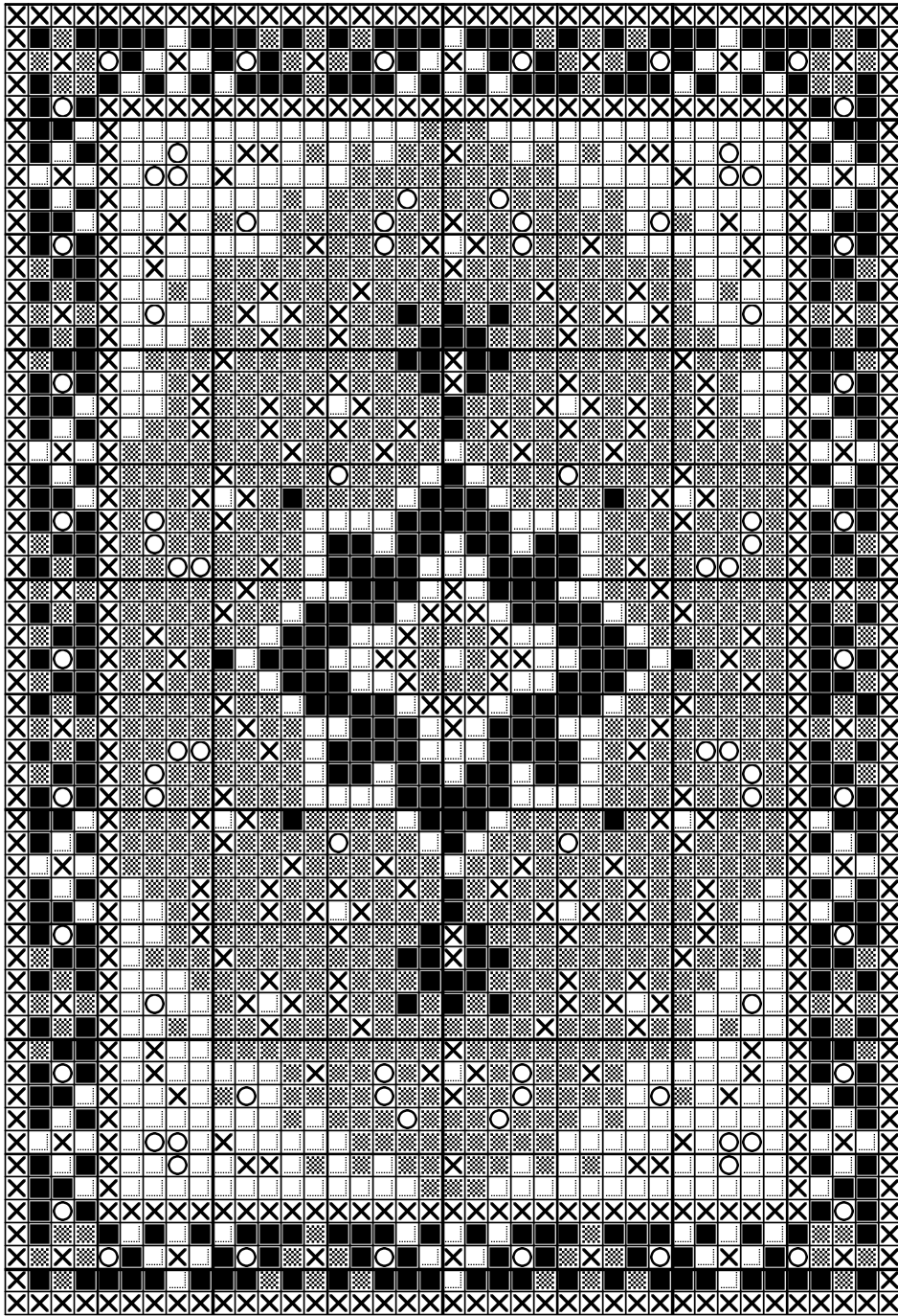







# Tabriz Heriz 1:144 scale rug



Design By: Anna-Carin Betzén, <http://hem.bredband.net/annbet/Minis>

Copyright © Anna-Carin Betzén 2005

		DMC
	Egyptian red	347
	Dark turquoise	3810
	Dune cream	739
	Tabacco brown	435
	Black	310

Stitch Count 39 x 57

Design Area 7/8 x 1 1/4 inches at 48ct  
 5/8 x 1 inches at 60ct  
 1/2 x 5/8 inches at 84ct

Note: The DMC floss suggested is for 48 count - if you choose to work on a smaller count, you can try silk sewing thread (perhaps removing one of the three plies to make it even thinner).

Cut an embroidery frame from sturdy card, with an aperture at least 1.5 cm (5/8") larger than the finished size of the rug. Cut gauze at least 1.2 cm (1/2") larger than the hole in the frame. Glue gauze to frame with Tacky Glue or similar.

Stitch with a single strand of floss. I suggest you locate the centre of the gauze and start with the medallion, working from the center and out. Next work the tan and turquoise stitches in the field around the medallion. Fill in with white and red before continuing with the border.

When finished, you can stitch a fringe if you like; you'll find instructions for it on my website.

Finally, apply Tacky Glue or similar to the last few rows of stitching on the back of the rug, around all edges. Work it in a little with a small, firm, paintbrush, and make sure that it covers the stitches closest to the edges too.

When dry, peel the gauze from the frame (I use to save the frames and reuse). Using sharp scissors, trim the fringed ends to a suitable length and cut along the very edges of the stitching on the other sides.

Design By: Anna-Carin Betzén, <http://hem.bredband.net/annbet/Minis>

Copyright © By: Anna-Carin Betzén 2005